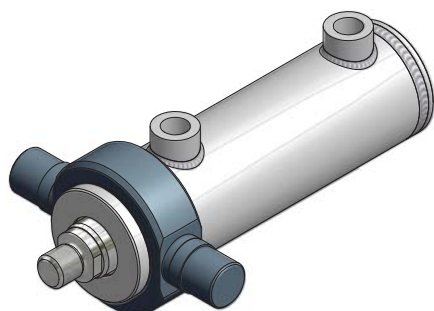


Vse dimenzije so v milimetrih./All dimensions are in millimetres.

| Bat<br>Piston<br>Ø | MM<br>Ø    | A   | B<br>Ø | CH  | X   | D<br>Ø | EE    | KK        | NA<br>Ø | WF | VE | Y   | PJ  | ZJ   |
|--------------------|------------|-----|--------|-----|-----|--------|-------|-----------|---------|----|----|-----|-----|------|
| 25                 | 14         | 17  | 35     | 12  | 32  | 20     | G 1/4 | M 12×1.25 | 13      | 17 | 8  | 43  | 18* | 78*  |
| 32                 | 20         | 19  | 42     | 15  | 36  | 20     | G 1/4 | M 14×1.5  | 17      | 20 | 10 | 61  | 38* | 129* |
| 40                 | 22/ 28     | 16  | 50     | 17  | 41  | 26     | G 3/8 | M 16×1.5  | 20      | 25 | 10 | 69  | 42  | 137  |
| 50                 | 28/ 36     | 16  | 60     | 22  | 46  | 26     | G 3/8 | M 16×1.5  | 25      | 25 | 10 | 75  | 45  | 150  |
| 63                 | 36/ 45     | 23  | 75     | 30  | 56  | 30     | G 1/2 | M 22×1.5  | 34      | 26 | 10 | 87  | 48  | 165  |
| 70                 | 40/ 45     | 23  | 85     | 30  | 60  | 30     | G 1/2 | M 22×1.5  | 34      | 26 | 10 | 83  | 56  | 165  |
| 80                 | 45/ 56     | 35  | 95     | 36  | 66  | 30     | G 1/2 | M 35×1.5  | 40      | 27 | 10 | 97  | 53  | 193  |
| 90                 | 40/ 50     | 35  | 105    | 36  | 70  | 30     | G 1/2 | M 35×1.5  | 38      | 27 | 10 | 93  | 66  | 193  |
| 100                | 56/ 63/ 70 | 45  | 115    | 46  | 78  | 38     | G 3/4 | M 45×1.5  | 50      | 27 | 10 | 112 | 62  | 214  |
| 110                | 63/ 70     | 45  | 130    | 46  | 86  | 38     | G 3/4 | M 45×1.5  | 50      | 27 | 10 | 107 | 72  | 214  |
| 125                | 70/ 90     | 58  | 145    | 60  | 93  | 38     | G 3/4 | M 58×1.5  | 65      | 32 | 12 | 128 | 63  | 240  |
| 140                | 80/100     | 65  | 165    | 65  | 104 | 45     | G 1   | M 65×1.5  | 75      | 32 | 12 | 142 | 75  | 270  |
| 160                | 90/110     | 80  | 190    | 80  | 119 | 45     | G 1   | M 80×2    | 85      | 40 | 15 | 155 | 75  | 295  |
| 180                | 110/125    | 80  | 220    | 80  | 134 | 45     | G 1   | M 80×2    | 90      | 50 | 20 | 170 | 75  | 320  |
| 200                | 125/140    | 110 | 245    | 110 | 144 | 45     | G 1   | M 110×2   | 120     | 50 | 20 | 190 | 75  | 340  |
| 250                | 140/160    | 125 | 300    | 120 | 175 | 45     | G 1   | M 120×3   | 130     | 58 | 20 | 198 | 107 | 390  |

\* Pri hodu do 10 mm se PJ in ZJ podaljšata za 10 mm./At stroke up to 10 mm PJ and ZJ are extend for 10 mm.



| Bat<br>Piston<br>Ø | XV    | BD  | TD<br>Ø f8 | TM  | TL  | BL  |
|--------------------|-------|-----|------------|-----|-----|-----|
| 25                 | 25    | 16  | 12         | 50  | 14  | 45  |
| 32                 | 30    | 20  | 17         | 68  | 17  | 60  |
| 40                 | 37.5  | 25  | 20         | 90  | 16  | 70  |
| 50                 | 40    | 30  | 25         | 105 | 20  | 80  |
| 63                 | 43.5  | 35  | 30         | 120 | 25  | 100 |
| 70                 | 43.5  | 35  | 30         | 120 | 25  | 110 |
| 80                 | 49.5  | 45  | 40         | 135 | 32  | 125 |
| 90                 | 49.5  | 45  | 40         | 135 | 32  | 135 |
| 100                | 54.5  | 55  | 50         | 160 | 40  | 150 |
| 110                | 54.5  | 55  | 50         | 160 | 40  | 150 |
| 125                | 64.5  | 65  | 60         | 195 | 50  | 180 |
| 140                | 67    | 70  | 65         | 220 | 60  | 200 |
| 160                | 82.5  | 85  | 80         | 240 | 60  | 235 |
| 180                | 82.5  | 85  | 80         | 270 | 60  | 265 |
| 200                | 102.5 | 105 | 100        | 295 | 80  | 295 |
| 250                | 123   | 130 | 125        | 365 | 100 | 360 |